

Care Instructions

1. Ensure guy ropes are out at all times during use.
2. Never pack your tent away wet. If you must take your tent down when wet, ensure that it is dried completely as soon as possible to prevent mildew forming
3. If mildew does form on your tent, wash off with warm water and a soft brush to prevent further growth, do not use soap or detergents
4. Do not use an open flame inside your tent. The fabric has been treated with a fire retardant but is in no way fire proof
5. Clean all pegs and poles before storing
6. This tent is not designed to withstand storm conditions. During strong winds, it is recommended that the tent be taken down
7. Do not leave your tent pitched unnecessarily for extended periods of time, UV light damages the fly and will shorten the life of your tent

Condensation

It is important that lower vents are opened at all times to reduce the risk of condensation. During humid or damp conditions, it is recommended that inner door covers are opened to expose the mesh layer to allow additional airflow throughout your tent.

Do not use foam swabs or non bonded mats directly on the tent floor. This will cause condensation between the mat and floor and if not dried out can lead to mildew forming.

5 Year Tent Guarantee

Please take time to read about the protection we offer you

All our tents come with a guarantee designed to protect you as our valued customer. Flow Imports Ltd, the makers of Zempire Camping Equipment tents, will repair or replace this tent, at their discretion, should it fail due to faulty materials or manufacture for a period of 5 years from the date of sale.

The Guarantee is subject to the following conditions:

1. The Guarantee only applies to an original purchaser who purchased this tent from an approved retail outlet.
2. The Guarantee does not apply if the tent has been used for anything other than reasonable personal camping use. Commercial use (e.g. rental) or continuous use as a residence are expressly excluded
3. Damage due to normal wear and tear, accident, acts of God, negligence (other than by Flow Imports Ltd), failure by the purchaser to ensure instructions for setting up and care are observed, deterioration due to abnormal exposure to ultraviolet light, insect or mildew attack, or any other cause reasonably beyond the control of Flow Imports Ltd are not covered
4. If redress is sought under the terms of this Guarantee, then the tent must be returned by the purchaser to the outlet from where it was purchased within the Guarantee period, in a clean, dry state and with proof of purchase
5. All transport costs and any other indirect costs are excluded from the Guarantee.
6. Flow Imports Ltd reserves the right to make a reasonable charge for repairs which it determines are not within the scope of the Guarantee
7. The Guarantee does not limit, modify or exclude any rights under any law if doing so would contravene that law or make any part of this Guarantee invalid. However, Flow Imports Ltd:
a) excludes (to the extent permitted by applicable law) all conditions and warranties that might otherwise be implied; and
b) limits its liability for breach of any such condition or Guarantee that it cannot exclude together with its liability under the Guarantee, to repairing or replacing the Goods or paying the cost of having the Goods repaired or replaced (at Flow Imports' option).

This tent has been made with meticulous care and attention to detail. Providing it's properly looked after and correctly stored, it will help you enjoy all that nature has to offer for years to come.

Get out more – you owe it to yourself.

For a detailed description of all the features and specifications of this product please visit our website.

WWW.ZEMPIRECAMPING.COM

Tested in New Zealand. Made with care in China

Zempire[®]
CAMPING EQUIPMENT

PITCHING INSTRUCTIONS

FORTRESS

CANVAS SERIES



PITCHING INSTRUCTIONS

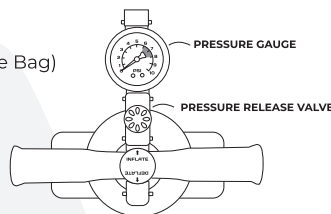
1 Test Run
Practice pitching your tent at home to ensure you understand the process

2 Pick A Site
When finding a site for your tent, try to find an area that is sheltered, flat, and free from sharp objects. If possible, position your tent with the front door facing away from the prevailing wind. Also try not to pitch your tent under trees as falling branches can damage the tent and falling sap can damage the fabric.

3 Unpacking
When you take your tent out for the first time, take a moment to see how it is packed or take a photo on your phone. This will help you when it comes to packing your tent away. Separate and identify the different parts in your tent.

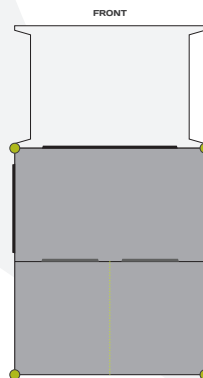
- Tent
- Pump
- Pressure release valve
- Guy Ropes (Pre-attached)
- Pressure gauge
- Additional Guy Ropes
- Pegs
- Inflatable Awning Set (Separate Bag)

4 Pump Setup
Your Zempire® Single Action Pump includes a pressure gauge and pressure release valve to ensure that the poles are inflated to the correct level. The pump accessories should be assembled in the following configuration.

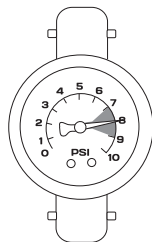


5 Layout
Unroll the tent with the floor facing down. Peg out the 4 corners of the sewn in ground sheet ensuring there is significant tension between the points and the floor sits as flat as possible. For best results pegs should be angled away from your tent at 45°.

6 Awning Stage 1
Whilst the tent is still uninflated on the ground, remove the awning from its bag and locate the zip set which you will be connecting to the tent. Locate the zip set which is on the front of the tent and zip the awning on ensuring the zip is all the way to the end. For the moment leave the awning on the floor and we will move back to inflating the tent.



7 Inflation
Make sure the 3 taps on the right hand side of the tent are closed off and internal window covers are opened to allow air to enter the tent. Connect the pump to the Boston Valve and inflate to between 7 and 9 PSI. The pressure release valve will "hiss" when 9 PSI is reached. It is important not to over inflate the tubes. It is recommended that during very hot weather 7 PSI is used to provide room for expansion during the day. In cooler or windier conditions 9 PSI is recommended. As each pole inflates it may be necessary to support the centre of the pole until they assume their correct shape. It is also a good time to ensure that the base of each pole is sitting correctly on the velcro patches of the tent floor. Poles can sometimes move off the velcro during the pitching process. Close the isolation taps inside the tent.



8 Setting The Floor
It may be necessary to align the base of each pole so that the floor sits flat and taught. You may also need to re-align the corner pegging points so the floor sits flat.

9 Awning Stage 2

1. Ensure that the release valves on the awning are closed
2. Connect the pump to the boston valve on the awning and inflate to between 7 and 9 PSI. Peg down the front of the awning to ensure it doesn't catch in the wind, this will need to be re-aligned once inflated. The awning will begin to stand independently
3. Once the awning is inflated trim the awning so that it sits in line with the tent and use the front webbing to ensure both of the legs are evenly spaced
4. Securely peg down the front section of the awning using the supplied pegs and guy ropes
5. Close the isolation valves inside of the awning

10 Pegging
Peg the remaining peg loops around the tent. Durable steel pegs are included with your tent which will be suitable for the majority of conditions. However, if you are camped at a rocky or loose sandy location it may pay to purchase more specialized pegs. A range of specialized Zempire® Pegs are available.

11 Guy Lines
Guy lines are pre-attached on all Zempire® Tents. It is recommended that guy lines are used at all times. It is important not to over tighten guy lines. They should sit taught but should not distort the shape of the tent

- Deflation**
- Open all isolation taps inside of the tent and awning
 - Unpeg all guy ropes and roll up to ensure they do not get tangled during packing
 - Unpeg the peg points excluding the 4 corners of the tent.
 - Open all 3 air release taps on the tent and the two release taps at the front of the awning. These taps should remain open during the pack down process
 - Carefully walk over the air tubes to expel as much air as possible
 - Unzip the awning from the tent
 - Unpeg the 4 corners of the tent
 - Clean and dry pegs before storing in the bag
 - Fold the rear and front of the tent into the centre
 - Fold both ends into the centre again
 - Roll towards the outlets and attach tension straps
 - Place inside carry bag
 - Extend the legs of the awning forward away from the awning roof
 - Fold the awning in half and then in half again
 - Roll the awning from the zipper end toward the release valves so that all of the remaining air is expelled
 - Attach tension straps and place inside carry bag

Weathering Your Tent
When you first get your tent you will need to weather it. This is a process of soaking the fabric to ensure that all the thread swells up filling stitch holes and creating a watertight surface. When you pitch your tent for the first time soak the fabric with a garden hose until the fabric looks visibly damp. Allow to dry and repeat for two or three times. Your tent will get more watertight the more you use it. Do not be concerned if you have a small amount of water coming through the seams on the first few times you get heavy rain.

Natural Fibre
Zempire® Canvas is made of combination of Natural Cotton for breathability and water fastness and polyester for strength. Please note that as cotton is a natural fiber you will notice variances of both color and thickness of the thread. This is normal and is a characteristic of a natural and breathable fiber.

Please turn page for Care Instructions and Warranty.